

Ice Thickness Data Workshop

December 9, 2024
6:30pm CT

The Great Lakes Observing System (GLOS) wants to partner with the **ice fishing community to gather ice thickness information**. This information will be used to improve ice models that provide ice predictions for the region.

GLOS is hosting a **workshop at UW-Green Bay** to share project details, and gauge interest from the ice fishing community. Volunteers can sign up to test the system, and may be eligible for stipends, upon providing data to GLOS.

The workshop will include short presentations followed by time for group feedback and discussion.

If you ice fish on Green Bay, Lake Michigan, or other parts of the Great Lakes, please consider attending!

Brown County STEM Innovation Center
University of Wisconsin-Green Bay,
2019 Technology Way, Green Bay, WI



Photo by Michigan Sea Grant

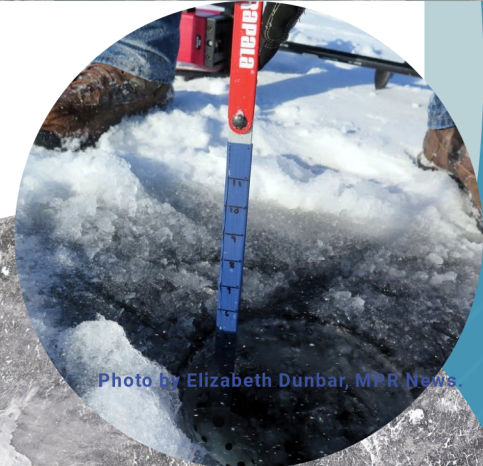


Photo by Elizabeth Dunbar, MPR News

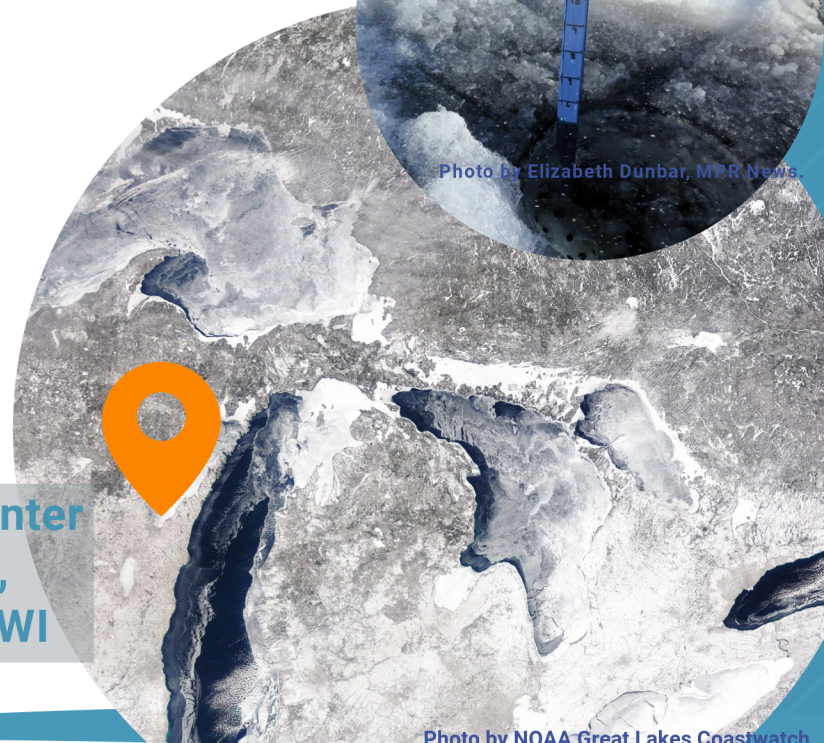


Photo by NOAA Great Lakes Coastwatch



Food and non-alcoholic beverages will be provided.



This event is made possible with funds from the Inflation Reduction Act